



BRIGHTLOTS

PARKING LOT LIGHTING & MAINTENANCE PRODUCTS

SHOP

Poles
Pole Accessories
LED Fixtures
LED Retrofits
LED Pole Kits
Emergency Exit Lights
Parking Lot Safety Products

TABLE OF CONTENTS

LED Pole Kits 2

 2 LED Aluminum Pole Kits 11

 1 LED Aluminum Pole Kit 13

 Decorative Pole Kits 15

 4 LED Aluminum Pole Kits 17

 3 LED Aluminum Pole Kits 19

LED POLE KITS



-15%



LISBON DECORATIVE ALUMINUM POLE KIT WITH ANCHOR BASE. 12FT, 3.5" OD FLUTED SHAFT

12 ft decorative aluminum pole with lantern type fixture. Complete with hardware and anchor bolt kit. Wattage (36W, 45W, 54W) and color (3000K, 4000K, 5000K) adjustable LED corn lamp.



Shipping Charges Apply

Due to the size and weight of this product we need to provide you with freight costs to your particular location. Please enter the quantity you are looking for and click on the "ADD TO QUOTE" button and provide us with your Ship-to information. We will get back to you ASAP.

[Read More](#)

SKU: BL-005-29M-10W

Price: \$987.00 ~~\$837.00~~

Categories: [Decorative Pole Kits](#), [LED Pole Kits](#)

WYSE-SERIES DECORATIVE LED POLE KIT | 60W, 100W | 12FT., 14FT., 16FT. | ANCHOR BASE

Build your own decorative LED-Pole Kit

Pole Selection: Heights available; 12ft., 14ft., 16ft. Round tapered aluminum pole.

LED Fixture Selection: WYSE Series LEDs. 60W - 100W options. 120-277V

Finish: Black powder coat only.

FREE Shipping.

Detailed spec sheets are below under DOWNLOAD section

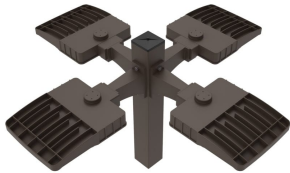


[Read More](#)

SKU: N/A

Price: \$1,556.52 — \$1,852.12 \$1,478.69 - \$1,759.51

Categories: [Decorative Pole Kits](#), [LED Pole Kits](#)



BUILD YOUR LED-POLE KIT | 100W-300W LEDS | 10 FT. - 25 FT. SQUARE ALUMINUM POLE | 4 LED

Build your own LED-Pole Kit

Pole Selections: Square Aluminum Pole. Heights: 10ft., 15ft., 20ft., 25ft.

LED Fixture Selections: FERIS Pole Top Fixtures. Wattages: 100W, 150W, 200W, 240W, 300W

Voltage: 120-277V, 347-480V

Finish Selections: Dark Bronze (standard), Black, White

FREE Shipping

Detailed Spec sheets are below under the DOWNLOAD tab

[Read More](#)

SKU: N/A

Categories: [4 LED Aluminum Pole Kits](#), [LED Pole Kits](#)

BUILD YOUR LED-POLE KIT | 100W-300W LEDS | 10 FT. - 25 FT. SQUARE ALUMINUM POLE | 3 LED



Build your own LED-Pole Kit

Pole Selections: Square Aluminum Pole. Heights: 10ft., 15ft., 20ft., 25ft.

LED Fixture Selections: FERIS Pole Top Fixtures. Wattages: 100W, 150W, 200W, 240W, 300W

Voltage: 120-277V, 347-480V

Finish Selections: Dark Bronze (standard), Black, White

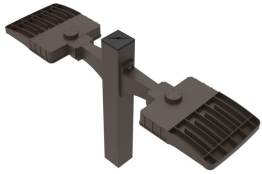
FREE Shipping

Detailed Spec sheets are below under the DOWNLOAD tab

[Read More](#)

SKU: N/A

Categories: [3 LED Aluminum Pole Kits](#), [LED Pole Kits](#)



BUILD YOUR LED-POLE KIT | 100W-300W LEDS | 10 FT. - 25 FT. SQUARE ALUMINUM POLE | 2 LED

Build your own LED-Pole Kit

Pole Selections: Square Aluminum Pole. Heights: 10ft., 15ft., 20ft., 25ft.
LED Fixture Selections: FERIS Pole Top Fixtures. Wattages: 100W,
150W, 200W, 240W, 300W

Voltage: 120-277V, 347-480V

Finish Selections: Dark Bronze (standard), Black, White

FREE Shipping

Detailed Spec sheets are below under the DOWNLOAD tab

[Read More](#)

SKU: N/A

Categories: [2 LED Aluminum Pole Kits](#), [LED Pole Kits](#)

BUILD YOUR LED-POLE KIT | 100W-300W LEDS | 10 FT. - 25 FT. SQUARE ALUMINUM POLE | 1 LED

Build your own LED-Pole Kit

Pole Selections: Square Aluminum Pole. Heights: 10ft., 15ft., 20ft., 25ft.

LED Fixture Selections: FERIS Pole Top Fixtures. Wattages: 100W,
150W, 200W, 240W, 300W

Voltage: 120-277V, 347-480V

Finish Selections: Dark Bronze (standard), Black, White

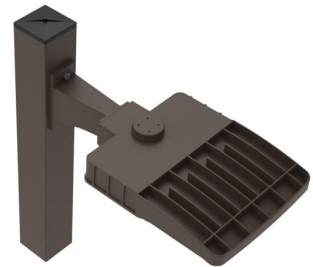
FREE Shipping

Detailed Spec sheets are below under the DOWNLOAD tab

[Read More](#)

SKU: N/A

Categories: [1 LED Aluminum Pole Kit](#), [LED Pole Kits](#)





BUILD YOUR LED-POLE KIT | 100W-150W-200W LEDS | 20 FT. - 35 FT. ALUMINUM TAPERED POLE | 3 LEDS

Our LED - Pole Kits include 3 LED fixtures (100, 150, 200 Watts available) and one LED-Ready tapered aluminum poles (20, 25, 30, and 35 feet available). The kit also includes 3 head tenon top aluminum brackets at 180 degrees. The only available color for kit building is dark bronze. We can make these kits in black, gray, or white however these will be custom made and pricing and lead-time will be impacted. If you have any questions please give us a call at (888)364-8802 or send us an email at customerservice@brightlots.com

instructions. scroll further down to build your led pole kit

[Step 1 Select your LED Fixture Options](#)

FERIS LED Fixtures - 140 Lumens per Watt

- Select from 100, 150 or 200 Watt
- Select your mounting bracket. In this case only Slip Fitter option is available as the poles are equipped with tenons to accommodate slip fitters.
- Select your photo sensor option.
- Select your motion sensor option.
- The quantity in this case will be 1 per kit. It is already set to 1 fixture.
- Click on the "Review Your Selection" to move to pole options



[Step 2 Select your Pole Options](#)

20, 25, 30 or 35 ft. LED-Ready Aluminum Tapered Poles

These poles come equipped with triple tenon inline bracket that will accommodate three LED fixtures with slip fitters at 180 degrees

- Select the color option; dark bronze. Please note, dark bronze is the only color option for these kits if you are buying online. Other colors are available. Please give us a call at (888)364-8802 or send us an email at customerservice@brightlots.com
- Select the anchor bolt covers. There are two options; anchor covers or a complete pole base cover.
- Click on the "Review Your Selection" to do a final review of the kit you built.



[Final Review and Purchase](#)

Your Kit is Ready To Review

Take a look at the kit you built. It is a 3 fixture at 180 degrees pole kit. Please recheck your selections. Now you can order the quantity of kits you need for your project by inserting the quantity you need. Remember this is the kit quantity; if you order 2 kits it will mean you are ordering 6 LED fixtures and 2 poles.

If you have any questions or are not sure of your selection or require a kit that is not available with these options give us a call at (888)364-8802 or email us at customerservice@brightlots.com

We offer other LED Pole kits that have single double triple heads and variety of combinations. Click Here to see our full line of LED Pole Kits.

[Read More](#)

SKU: N/A

Categories: [3 LED Aluminum Pole Kits](#), [LED Pole Kits](#)

1. LED Fixtures | FERIS



FERIS Series - 120-277V - 100W
FERIS 120V Mounting Options: Slip Fitter - \$F
FERIS 120V Photo Sensor: Yes (Adder \$18)
FERIS 120V Motion Sensor: Yes (Adder \$37)
\$197.00 **\$187.15**

[EDIT](#)

2. LED-Ready Aluminum Pole

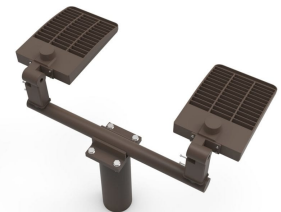


LBRTAF-6201564820" 20 ft. 6" Butt Dia. 0.156 ga. 3 Fixture 180, LED Ready Light Pole
Color: Dark Bronze
Anchor Bolt Cover Options: Complete Square Base Cover (Adder \$120)
\$1,229.00 **\$1,209.86**

[EDIT](#)

BUILD YOUR LED-POLE KIT | 100W-150W-200W LEDS | 20 FT. - 25 FT. ALUMINUM TAPERED POLE | 2 LEDS

This LED - Pole Kit includes two LED fixtures of your choice (100, 150, 200 Watts available) and one of our 20 ft. or 25 ft. LED-Ready tapered aluminum poles. The kit also includes a two tenon top aluminum bracket. The only available color for the kit building is dark bronze. We can make these kits in black, gray, or white however these will be custom made and pricing and lead-time will be impacted. If you have any questions please give us a call at (888)364-8802 or send us an email at customerservice@brightlots.com



instructions. scroll further down to build your led pole kit

[Step 1 Select your LED Fixture Options](#)

FERIS LED Fixtures - 140 Lumens per Watt

- Select from 100, 150 or 200 Watt
- Select your mounting bracket. In this case only Slip Fitter option is available as the poles are equipped with tenons to accommodate slip fitters.



- Select your photo sensor option.
- Select your motion sensor option.
- The quantity in this case will be 1 per kit. It is already set to 1 fixture.
- Click on the "Review Your Selection" to move to pole options

[Step 2 Select your Pole Options](#)

20 ft. or 25 ft. LED-Ready Aluminum Tapered Poles

These poles come equipped with double tenon inline bracket that will accommodate two LED fixtures with slip fitters at 180 degrees



- Select the color option; dark bronze. Please note, dark bronze is the only color option for these kits if you are buying online. Other colors are available. Please give us a call at (888)364-8802 or send us an email at customerservice@brightlots.com
- Select the anchor bolt covers. There are two options; anchor covers or a complete pole base cover.
- Click on the "Review Your Selection" to do a final review of the kit you built.

[Final Review and Purchase](#)

Your Kit is Ready To Review

Take a look at the kit you built. It is a 2 fixture at 180 degrees pole kit. Please recheck your selections. Now you can order the quantity of kits you need for your project by inserting the quantity you need. Remember this is the kit quantity; if you order 2 kits it will mean you are ordering 4 LED fixtures and 2 poles.

If you have any questions or are not sure of your selection or require a kit that is not available with these options give us a call at (888)364-8802 or email us at customerservice@brightlots.com


We offer other LED Pole kits that have single double triple heads and variety of combinations. Click Here to see our full line of LED Pole Kits.

[Read More](#)

SKU: N/A

Categories: [2 LED Aluminum Pole Kits](#), [LED Pole Kits](#)


1. FERIS LED



FERIS Series - 120-277V - 100W x 2
FERIS 120V Mounting Options: Slip Fitter - SF
FERIS 120V Photo Sensor: Yes (Add \$10)
FERIS 120V Motion Sensor: Yes (Add \$37)
\$584.00 **\$374.00**

EDIT

2. LED-Ready Aluminum Pole



LBRTAF-725188452 25 ft. 7" Dia. 0.180 ga. 2 Fixture 180, LED Ready Light Pole
Color: Dark Bronze
Anchor Bolt Cover Options: Complete Square Base Cover (Add \$120)
\$1,422.00 **\$1,295.35**

EDIT



BUILD YOUR LED-POLE KIT | 200W-300W LEDS | 20 FT. - 35 FT. ALUMINUM TAPERED POLE | 4 LEDS

Our LED - Pole Kits include 4 LED fixtures (200 or 300 Watts available) and one LED-Ready tapered aluminum poles (20, 25, 30 and 35 feet available). The kit also includes 4 head tenon top aluminum bracket at 90 degrees. The only available color for kit building is dark bronze. We can make these kits in black, gray or white however these will be custom made and pricing and lead-time will be impacted. If you have any questions please give us a call at (888)364-8802 or send us an email at customerservice@brightlots.com

instructions. scroll further down to build your led pole kit

[Step 1 Select your LED Fixture Options](#)

FERIS LED Fixtures - 140 Lumens per Watt

- Select from 200 Watt or 300 Watt options
- Select your mounting bracket. In this case only Slip Fitter option is available as the poles are equipped with tenons to accommodate slip fitters.
- Select your photo sensor option.
- Select your motion sensor option.
- The quantity in this case will be 4 per kit. It is already set to 4 fixtures.
- Click on the "Review Your Selection" to move to pole options



[Step 2 Select your Pole Options](#)

20, 25, 30, 35 ft. LED-Ready Aluminum Tapered Poles

These poles come equipped with tenons that will accommodate 4 LED fixtures with slip fitters.

- Select from available pole heights: 20, 25, 30, 35 ft.
- Select the color option; dark bronze. Please note, dark bronze is the only color option for these kits if you are buying online. Other colors are available. Please give us a call at (888)364-8802 or send us an email at customerservice@brightlots.com
- Select the anchor bolt covers. There are two options; anchor covers or a complete pole base cover.
- Click on the "Review Your Selection"



to do a final review of the kit you built.

[Final Review and Purchase](#)

Your Kit is Ready To Review

Take a look at the kit you built. It is a 4 fixture at 90 degrees pole kit. Please recheck your selections. Now you can order the quantity of kits you need for your project by inserting the quantity you need. Remember this is the kit quantity; if you order 2 kits it will mean you are ordering 8 LED fixtures and 2 poles.

If you have any questions or are not sure of your selection or require a kit that is not available with these options give us a call at (888)364-8802 or email us at customerservice@brightlots.com

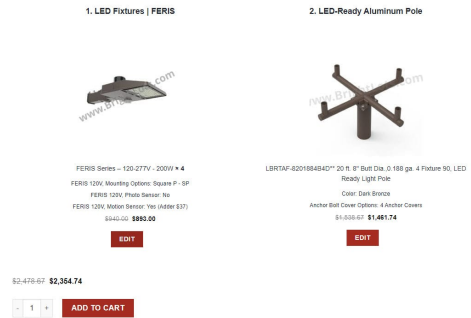
We offer other LED Pole kits that have single double triple heads and variety of combinations. Click Here to see our full line of LED Pole Kits.

[Read More](#)

SKU: N/A

Price: From: ~~\$3,168.02~~ \$3,009.62

Categories: [4 LED Aluminum Pole Kits](#), [LED Pole Kits](#)



BUILD YOUR LED-POLE KIT | 100W-150W-200W LEDS | 20 FT. ALUMINUM TAPERED POLE | 1 LED

This LED - Pole Kit includes a single LED fixtures (100, 150, 200 Watts available) and one 20 ft. LED-Ready tapered aluminum poles. The kit also includes single tenon top aluminum bracket. The only available color for kit building is dark bronze. We can make these kits in black, gray or white however these will be custom made and pricing and lead-time will be impacted. If you have any questions please give us a call at (888)364-8802 or send us an email at customerservice@brightlots.com



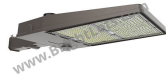
instructions. scroll further down to build your led pole kit

[Step 1 Select your LED Fixture Options](#)

FERIS LED Fixtures - 140 Lumens per Watt

- Select from 75, 100 or 150 Watt

- Select your mounting bracket. In this case only Slip Fitter option is available as the poles are equipped with tenons to accommodate slip fitters.
- Select your photo sensor option.
- Select your motion sensor option.
- The quantity in this case will be 1 per kit. It is already set to 1 fixture.
- Click on the "Review Your Selection" to move to pole options



[Step 2 Select your Pole Options](#)

20, ft. LED-Ready Aluminum Tapered Poles

These poles come equipped with single tenon that will accommodate a single LED fixtures with slip fitters.




- Select the color option; dark bronze. Please note, dark bronze is the only color option for these kits if you are buying online. Other colors are available. Please give us a call at (888)364-8802 or send us an email at customerservice@brightlots.com
- Select the anchor bolt covers. There are two options; anchor covers or a complete pole base cover.
- Click on the "Review Your Selection" to do a final review of the kit you built.

[Final Review and Purchase](#)

Your Kit is Ready To Review

Take a look at the kit you built. It is a 4 fixture at 90 degrees pole kit. Please recheck your selections. Now you can order the quantity of kits you need for your project by inserting the quantity you need. Remember this is the kit quantity; if you order 2 kits it will mean you are ordering 8 LED fixtures and 2 poles.


1. PERIS LED



PERIS Series - 120-277V - 200W
PERIS 120V Mounting Options: Slip Fitter - 10'
PERIS 120V Photo Sensor: No
PERIS 120V Motion Sensor: No
Anchor Bolt: \$188.75

[EDIT](#)

2. Single LED Pole



LBR7AF-620105461** 20 ft. 1" Slip Dia. 0.155 ga. 1 Fixture, LED Ready Light Pole
Color: Dark Bronze
Anchor Bolt Cover Options: 4 Anchor Covers
Anchor Bolt: \$188.75

[VIEW](#)

\$1,149.00 **\$1,088.70**

[-](#) [1](#) [+](#) [ADD TO CART](#)

If you have any questions or are not sure of your selection or require a kit that is not available with these options give us a call at (888)364-8802 or email us at customerservice@brightlots.com

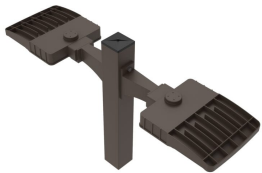
We offer other LED Pole kits that have single double triple heads and variety of combinations. [Click Here](#) to see our full line of LED Pole Kits.

[Read More](#)

SKU: N/A

Categories: [1 LED Aluminum Pole Kit](#), [LED Pole Kits](#)

2 LED ALUMINUM POLE KITS



BUILD YOUR LED-POLE KIT | 100W-300W LEDS | 10 FT. - 25 FT. SQUARE ALUMINUM POLE | 2 LED

Build your own LED-Pole Kit

Pole Selections: Square Aluminum Pole. Heights: 10ft., 15ft., 20ft., 25ft.

LED Fixture Selections: FERIS Pole Top Fixtures. Wattages: 100W, 150W, 200W, 240W, 300W

Voltage: 120-277V, 347-480V

Finish Selections: Dark Bronze (standard), Black, White

FREE Shipping

Detailed Spec sheets are below under the DOWNLOAD tab

[Read More](#)

SKU: N/A

Categories: [2 LED Aluminum Pole Kits](#), [LED Pole Kits](#)

BUILD YOUR LED-POLE KIT | 100W-150W-200W LEDS | 20 FT. - 25 FT. ALUMINUM TAPERED POLE | 2 LEDS

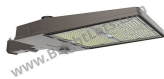


This LED - Pole Kit includes two LED fixtures of your choice (100, 150, 200 Watts available) and one of our 20 ft. or 25 ft. LED-Ready tapered aluminum poles. The kit also includes a two tenon top aluminum bracket. The only available color for the kit building is dark bronze. We can make these kits in black, gray, or white however these will be custom made and pricing and lead-time will be impacted. If you have any questions please give us a call at (888)364-8802 or send us an email at customerservice@brightlots.com

instructions. scroll further down to build your led pole kit

[Step 1 Select your LED Fixture Options](#)

FERIS LED Fixtures - 140 Lumens per Watt



- Select from 100, 150 or 200 Watt
- Select your mounting bracket. In this case only Slip Fitter option is available as the poles are equipped with tenons to accommodate slip fitters.
- Select your photo sensor option.
- Select your motion sensor option.
- The quantity in this case will be 1 per kit. It is already set to 1 fixture.
- Click on the "Review Your Selection" to move to pole options

[Step 2 Select your Pole Options](#)

20 ft. or 25 ft. LED-Ready Aluminum Tapered Poles



These poles come equipped with double tenon inline bracket that will accommodate two LED fixtures with slip fitters at 180 degrees

- Select the color option; dark bronze. Please note, dark bronze is the only color option for these kits if you are buying online. Other colors are available. Please give us a call at (888)364-8802 or send us an email at customerservice@brightlots.com
- Select the anchor bolt covers. There are two options; anchor covers or a complete pole base cover.
- Click on the "Review Your Selection" to do a final review of the kit you built.

[Final Review and Purchase](#)

Your Kit is Ready To Review

Take a look at the kit you built. It is a 2 fixture at 180 degrees pole kit. Please recheck your selections. Now you can order the quantity of kits you need for your project by inserting the quantity you need. Remember this is the kit quantity; if you order 2 kits it will mean you are ordering 4 LED fixtures and 2 poles.

If you have any questions or are not sure of your selection or require a kit that is not available with these options give us a call at (888)364-8802 or email us at customerservice@brightlots.com

We offer other LED Pole kits that have single double triple heads and variety of combinations. Click Here to see our full line of LED Pole Kits.

[Read More](#)

SKU: N/A

Categories: [2 LED Aluminum Pole Kits](#), [LED Pole Kits](#)

1. FERIS LED



FERIS Series - 120-277V - 100W x 2
FERIS 120V Mounting Options: Slo Filter - 0"
FERIS 120V Photo Sensor: Yes (Add \$19)
FERIS 120V Motion Sensor: Yes (Add \$37)
\$304.00 **\$274.20**

[EDIT](#)

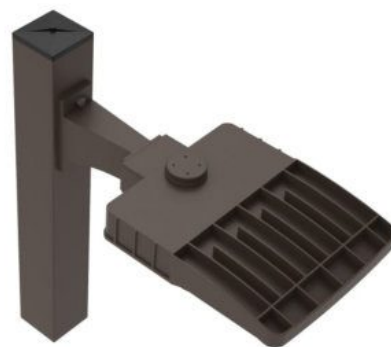
2. LED-Ready Aluminum Pole

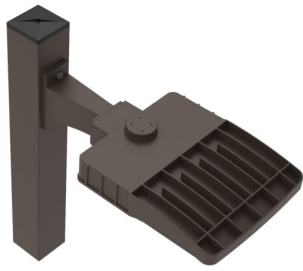


LBRTAF-725188482" 25 ft. 7" Dia Dia. 8 180 ga. 2 Fixture 180 LED
Ready Light Pole
Color: Dark Bronze
Anchor Bolt Cover Options: Complete Square Base Cover (Add \$120)
\$1,423.00 **\$1,288.35**

[EDIT](#)

1 LED ALUMINUM POLE KIT





BUILD YOUR LED-POLE KIT | 100W-300W LEDS | 10 FT. - 25 FT. SQUARE ALUMINUM POLE | 1 LED

Build your own LED-Pole Kit

Pole Selections: Square Aluminum Pole. Heights: 10ft., 15ft., 20ft., 25ft.
LED Fixture Selections: FERIS Pole Top Fixtures. Wattages: 100W, 150W, 200W, 240W, 300W

Voltage: 120-277V, 347-480V

Finish Selections: Dark Bronze (standard), Black, White

FREE Shipping

Detailed Spec sheets are below under the DOWNLOAD tab

[Read More](#)

SKU: N/A

Categories: [1 LED Aluminum Pole Kit](#), [LED Pole Kits](#)

BUILD YOUR LED-POLE KIT | 100W-150W-200W LEDS | 20 FT. ALUMINUM TAPERED POLE | 1 LED

This LED - Pole Kit includes a single LED fixtures (100, 150, 200 Watts available) and one 20 ft. LED-Ready tapered aluminum poles. The kit also includes single tenon top aluminum bracket. The only available color for kit building is dark bronze. We can make these kits in black, gray or white however these will be custom made and pricing and lead-time will be impacted. If you have any questions please give us a call at (888)364-8802 or send us an email at customerservice@brightlots.com



instructions. scroll further down to build your led pole kit

[Step 1 Select your LED Fixture Options](#)

FERIS LED Fixtures - 140 Lumens per Watt

- Select from 75, 100 or 150 Watt
- Select your mounting bracket. In this case only Slip Fitter option is available as the poles are equipped with tenons to accommodate slip fitters.
- Select your photo sensor option.
- Select your motion sensor option.
- The quantity in this case will be 1 per kit. It is already set to 1 fixture.
- Click on the "Review Your Selection" to move to pole options



[Step 2 Select your Pole Options](#)

20, ft. LED-Ready Aluminum Tapered Poles

These poles come equipped with single tenon that will accommodate a single LED fixtures with slip fitters.




- Select the color option; dark bronze. Please note, dark bronze is the only color option for these kits if you are buying online. Other colors are available. Please give us a call at (888)364-8802 or send us an email at customerservice@brightlots.com
- Select the anchor bolt covers. There are two options; anchor covers or a complete pole base cover.
- Click on the "Review Your Selection" to do a final review of the kit you built.

[Final Review and Purchase](#)

Your Kit is Ready To Review


Take a look at the kit you built. It is a 4 fixture at 90 degrees pole kit. Please recheck your selections. Now you can order the quantity of kits you need for your project by inserting the quantity you need. Remember this is the kit quantity; if you order 2 kits it will mean you are ordering 8 LED fixtures and 2 poles.



1. FERIS LED

FERIS Series - 120-277V - 200W
FERIS 120V Mounting Options: Slip Pole - 10'
FERIS 120V Photo Sensor: No
FERIS 120V Motion Sensor: No
\$148.00 **\$188.10**

[EDIT](#)



2. Single LED Pole

LBR1AF-620105461**20 ft. 6" Butt Dia. 0.155 ga. 1 Fixture, LED Ready Light Pole:
Color: Dark Bronze
Anchor Bolt Cover Options: 4 Anchor Covers
\$848.00 **\$900.60**

[VIEW](#)

\$1,149.00 **\$1,088.70**

[1](#) [ADD TO CART](#)

If you have any questions or are not sure of your selection or require a kit that is not available with these options give us a call at (888)364-8802 or email us at customerservice@brightlots.com

We offer other LED Pole kits that have single double triple heads and variety of combinations. [Click Here](#) to see our full line of LED Pole Kits.

[Read More](#)

SKU: N/A

Categories: [1 LED Aluminum Pole Kit](#), [LED Pole Kits](#)

DECORATIVE POLE

KITS



-15%



LISBON DECORATIVE ALUMINUM POLE KIT WITH ANCHOR BASE. 12FT, 3.5" OD FLUTED SHAFT

12 ft decorative aluminum pole with lantern type fixture. Complete with hardware and anchor bolt kit. Wattage (36W, 45W, 54W) and color (3000K, 4000K, 5000K) adjustable LED corn lamp.



Shipping Charges Apply

Due to the size and weight of this product we need to provide you with freight costs to your particular location. Please enter the quantity you are looking for and click on the "ADD TO QUOTE" button and provide us with your Ship-to information. We will get back to you ASAP.

[Read More](#)

SKU: BL-005-29M-10W

Price: ~~\$987.00~~ \$837.00

Categories: [Decorative Pole Kits](#), [LED Pole Kits](#)

WYSE-SERIES DECORATIVE LED POLE KIT | 60W, 100W | 12FT., 14FT., 16FT. | ANCHOR BASE



Build your own decorative LED-Pole Kit

Pole Selection: Heights available; 12ft., 14ft., 16ft. Round tapered aluminum pole.

LED Fixture Selection: WYSE Series LEDs. 60W - 100W options. 120-277V

Finish: Black powder coat only.

FREE Shipping.

Detailed spec sheets are below under DOWNLOAD section

[Read More](#)

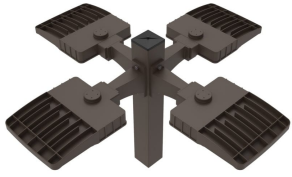
SKU: N/A

Price: ~~\$1,556.52~~ ~~— \$1,852.12~~ ~~\$1,478.69~~ - ~~\$1,759.51~~

Categories: [Decorative Pole Kits](#), [LED Pole Kits](#)

4 LED ALUMINUM POLE KITS





BUILD YOUR LED-POLE KIT | 100W-300W LEDS | 10 FT. - 25 FT. SQUARE ALUMINUM POLE | 4 LED

Build your own LED-Pole Kit

Pole Selections: Square Aluminum Pole. Heights: 10ft., 15ft., 20ft., 25ft.
LED Fixture Selections: FERIS Pole Top Fixtures. Wattages: 100W, 150W, 200W, 240W, 300W

Voltage: 120-277V, 347-480V

Finish Selections: Dark Bronze (standard), Black, White

FREE Shipping

Detailed Spec sheets are below under the DOWNLOAD tab

[Read More](#)

SKU: N/A

Categories: [4 LED Aluminum Pole Kits](#), [LED Pole Kits](#)

BUILD YOUR LED-POLE KIT | 200W-300W LEDS | 20 FT. - 35 FT. ALUMINUM TAPERED POLE | 4 LEDS



Our LED - Pole Kits include 4 LED fixtures (200 or 300 Watts available) and one LED-Ready tapered aluminum poles (20, 25, 30 and 35 feet available). The kit also includes 4 head tenon top aluminum bracket at 90 degrees. The only available color for kit building is dark bronze. We can make these kits in black, gray or white however these will be custom made and pricing and lead-time will be impacted. If you have any questions please give us a call at (888)364-8802 or send us an email at customerservice@brightlots.com

instructions. scroll further down to build your led pole kit

[Step 1 Select your LED Fixture Options](#)

FERIS LED Fixtures - 140 Lumens per Watt



- Select from 200 Watt or 300 Watt options
- Select your mounting bracket. In this case only Slip Fitter option is available as the poles are equipped with tenons to accommodate slip fitters.
- Select your photo sensor option.
- Select your motion sensor option.
- The quantity in this case will be 4 per kit. It is already set to 4 fixtures.

- Click on the "Review Your Selection" to move to pole options

[Step 2 Select your Pole Options](#)

20, 25, 30, 35 ft. LED-Ready Aluminum Tapered Poles

These poles come equipped with tenons that will accommodate 4 LED fixtures with slip fitters.





- Select from available pole heights: 20, 25, 30, 35 ft.
- Select the color option; dark bronze. Please note, dark bronze is the only color option for these kits if you are buying online. Other colors are available. Please give us a call at (888)364-8802 or send us an email at customerservice@brightlots.com
- Select the anchor bolt covers. There are two options; anchor covers or a complete pole base cover.
- Click on the "Review Your Selection" to do a final review of the kit you built.

[Final Review and Purchase](#)

Your Kit is Ready To Review

Take a look at the kit you built. It is a 4 fixture at 90 degrees pole kit. Please recheck your selections. Now you can order the quantity of kits you need for your project by inserting the quantity you need. Remember this is the kit quantity; if you order 2 kits it will mean you are ordering 8 LED fixtures and 2 poles.

<p>1. LED Fixtures FERIS</p>  <p>FERIS Series - 120-277V - 5000K - 4 FERIS 120V Mounting Options: Square P - 18" FERIS 120V Photo Sensor: No FERIS 120V Motion Sensor: Yes (Add \$31) \$940.00 \$892.00 [EDIT]</p>	<p>2. LED-Ready Aluminum Pole</p>  <p>LBR2AF-4201848420" 20 ft. 8" Butt Dia. 2.188 ga. 4 Fixture 90 LED Ready Light Pole Color: Dark Bronze Anchor Bolt Cover Options: 4 Anchor Covers \$1,439.00 \$1,481.74 [EDIT]</p>
--	---

\$2,479.60 **\$2,354.74**

1 [ADD TO CART]

If you have any questions or are not sure of your selection or require a kit that is not available with these options give us a call at (888)364-8802 or email us at customerservice@brightlots.com

We offer other LED Pole kits that have single double triple heads and variety of combinations. Click Here to see our full line of LED Pole Kits.

[Read More](#)

SKU: N/A

Price: From: ~~\$3,168.02~~ **\$3,009.62**

Categories: [4 LED Aluminum Pole Kits](#), [LED Pole Kits](#)

3 LED ALUMINUM POLE KITS



BUILD YOUR LED-POLE KIT | 100W-300W LEDS | 10 FT. - 25 FT. SQUARE ALUMINUM POLE | 3 LED

Build your own LED-Pole Kit

Pole Selections: Square Aluminum Pole. Heights: 10ft., 15ft., 20ft., 25ft.

LED Fixture Selections: FERIS Pole Top Fixtures. Wattages: 100W, 150W, 200W, 240W, 300W

Voltage: 120-277V, 347-480V

Finish Selections: Dark Bronze (standard), Black, White

FREE Shipping

Detailed Spec sheets are below under the DOWNLOAD tab

[Read More](#)

SKU: N/A

Categories: [3 LED Aluminum Pole Kits](#), [LED Pole Kits](#)

BUILD YOUR LED-POLE KIT | 100W-150W-200W LEDS | 20 FT. - 35 FT. ALUMINUM TAPERED POLE | 3 LEDS

Our LED - Pole Kits include 3 LED fixtures (100, 150, 200 Watts available) and one LED-Ready tapered aluminum poles (20, 25, 30, and 35 feet available). The kit also includes 3 head tenon top aluminum brackets at 180 degrees. The only available color for kit building is dark bronze. We can make these kits in black, gray, or white however these will be custom made and pricing and lead-time will be impacted. If you have any questions please give us a call at (888)364-8802 or send us an email at customerservice@brightlots.com

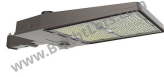


instructions. scroll further down to build your led pole kit

[Step 1 Select your LED Fixture Options](#)

FERIS LED Fixtures - 140 Lumens per Watt

- Select from 100, 150 or 200 Watt
- Select your mounting bracket. In this case only Slip Fitter option is available as the poles are equipped with tenons to accommodate slip fitters.
- Select your photo sensor option.
- Select your motion sensor option.
- The quantity in this case will be 1 per kit. It is already set to 1 fixture.
- Click on the "Review Your Selection" to move to pole options



[Step 2 Select your Pole Options](#)

20, 25, 30 or 35 ft. LED-Ready Aluminum Tapered Poles

These poles come equipped with triple tenon inline bracket that will accommodate three LED fixtures with slip fitters at 180 degrees

- Select the color option; dark bronze. Please note, dark bronze is the only color option for these kits if you are buying online. Other colors are available. Please give us a call at (888)364-8802 or send us an email at customerservice@brightlots.com
- Select the anchor bolt covers. There are two options; anchor covers or a complete pole base cover.
- Click on the "Review Your Selection" to do a final review of the kit you built.



[Final Review and Purchase](#)

Your Kit is Ready To Review

Take a look at the kit you built. It is a 3 fixture at 180 degrees pole kit. Please recheck your selections. Now you can order the quantity of kits you need for your project by inserting the quantity you need. Remember this is the kit quantity; if you order 2 kits it will mean you are ordering 6 LED fixtures and 2 poles.

If you have any questions or are not sure of your selection or require a kit that is not available with these options give us a call at

1. LED Fixtures | FERIS



FERIS Series - 120-277V - 100W
FERIS 120V Mounting Options: Slip Fitter - SF
FERIS 120V Photo Sensor: Yes (Add \$19)
FERIS 120V Motion Sensor: Yes (Add \$37)
\$197.00 **\$187.15**

EDIT

2. LED-Ready Aluminum Pole



LBRTAF-620156483** 20 ft. 6" Butt Dia. 0.156 ga. 3 Fixture 180, LED Ready Light Pole
Color: Dark Bronze
Anchor Bolt Cover Options: Complete Square Base Cover (Add \$120)
\$1,212.00 **\$1,209.66**

EDIT

(888)364-8802 or email us at
customerservice@brightlots.com

We offer other LED Pole kits that have single double triple heads and variety of combinations. Click Here to see our full line of LED Pole Kits.

[Read More](#)

SKU: N/A

Categories: [3 LED Aluminum Pole Kits](#), [LED Pole Kits](#)

INDEX

B

Build Your LED-Pole Kit | 100W-150W-200W LEDs | 20 ft. - 35 ft. Aluminum Tapered Pole | 3 LEDs 5, 20

Build Your LED-Pole Kit | 100W-150W-200W LEDs | 20 ft. Aluminum Tapered Pole | 1 LED 9, 14

Build Your LED-Pole Kit | 100W-150W-200W LEDs | 20 ft. - 25 ft. Aluminum Tapered Pole | 2 LEDs 6, 12

Build Your LED-Pole Kit | 100W-300W LEDs | 10 ft. - 25 ft. Square Aluminum Pole | 1 LED 4, 14

Build Your LED-Pole Kit | 100W-300W LEDs | 10 ft. - 25 ft. Square Aluminum Pole | 2 LED 4, 11

Build Your LED-Pole Kit | 100W-300W LEDs | 10 ft. - 25 ft. Square Aluminum Pole | 3 LED 3, 20

Build Your LED-Pole Kit | 100W-300W LEDs | 10 ft. - 25 ft. Square Aluminum Pole | 4 LED 3, 18

Build Your LED-Pole Kit | 200W-300W LEDs | 20 ft. - 35 ft. Aluminum Tapered Pole | 4 LEDs 8, 18

L

Lisbon Decorative Aluminum Pole Kit With Anchor Base. 12ft, 3.5" OD Fluted Shaft 2, 16

W

WYSE-Series Decorative LED Pole Kit | 60W, 100W | 12ft., 14ft., 16ft. | Anchor Base 2, 17