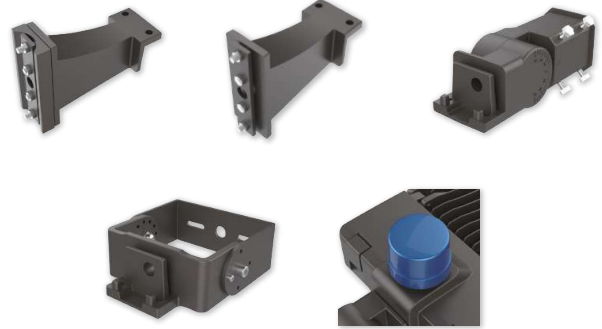


FERIS Series LED Fixtures

BRIGHTLOTS



UP TO
140
LUMENS
WATT

LED Parking Lot lights | Area Lights | Street Lights



Range : Standard Lumen (140 lm/W)

Model	Nominal wattages (W)	Input Voltages	Rated luminous efficacy (lm/w)	Nominal luminous flux (lumen)	Beam Angle	LED Quantity	CRI
FR-120-100	100W	AC100~277V	140±5	14000±500	TYPE 3 TYPE 5	140pcs EMC3030	>70
FR-480-100	100W	AC200~480V	140±5	14000±500		140pcs EMC3030	
FR-120-150	150W	AC100~277V	135±5	20000±750		140pcs EMC3030	
FR-480-150	150W	AC200~480V	135±5	20000±750		140pcs EMC3030	
FR-120-200	200W	AC100~277V	140±5	28000±1000		196pcs EMC3030	
FR-480-200	200W	AC200~480V	140±5	28000±1000		196pcs EMC3030	
FR-120-240	240W	AC100~277V	140±5	33600±1200		392pcs EMC3030	
FR-480-240	240W	AC200~480V	140±5	33600±1200		392pcs EMC3030	
FR-120-300	300W	AC100~277V	140±5	42000±1500		392pcs EMC3030	
FR-480-300	300W	AC200~480V	140±5	42000±1500		392pcs EMC3030	

Range : Lumen Plus (160 lm/W)

Model	Nominal wattages (W)	Input Voltages	Rated luminous efficacy (lm/w)	Nominal luminous flux (lumen)	Beam Angle	LED Quantity	CRI
FR-120-100-16	100W	AC100~277V	160±5	16000±500	TYPE 3 TYPE 5	196pcs EMC3030	>70
FR-480-100-16	100W	AC200~480V	160±5	16000±500		196pcs EMC3030	
FR-120-150-16	150W	AC100~277V	165±5	24000±750		280pcs EMC3030	
FR-480-150-16	150W	AC200~480V	165±5	24000±750		280pcs EMC3030	
FR-120-240-16	200W	AC100~277V	160±5	38400±1200		560pcs EMC3030	
FR-480-240-16	200W	AC200~480V	160±5	38400±1200		560pcs EMC3030	
FR-120-300-16	240W	AC100~277V	160±5	48000±1500		560pcs EMC3030	
FR-480-300-16	240W	AC200~480V	160±5	48000±1500		560pcs EMC3030	



Features

- Streamlined modern design
- 140 lm/w, 160 lm/w available
- Tool free maintenance
- IP66 and 5 years warranty
- Beam angel options: Type3, Type5
- 1-10V dimmable or DALI dimmable
- Photocell
- Motion sensor
- 120V & 480V high voltage driver
- Parking lots & Streets
- Outdoor basketball court, tennis court
- Badminton court, football field
- The school playground, stadium
- Walkways and building grounds

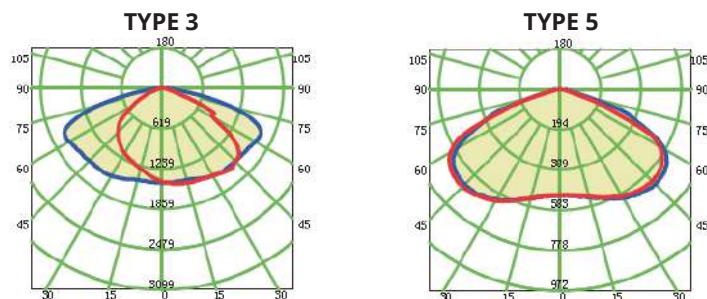


Electricals

Operating frequency	47-63HZ	Available light colors	warm white;natural white; daylight white
Type of current	AC100-277V AC200-480V	Available color temperatures	3000K;4000K;5000K;6000K
Power factor λ	>0.9	Color rendering index Ra	>70
Efficiency in %	>92%	Standard deviation of color matching	<5
Start time (0.2s / 0.5s / ...)	0.1S	UGR (Unified Glare Rating)	<27
Warm-up time to 60 % (1.5s / 2s / ...)	0.5S	Available beam angles	TYPE3,TYPE5

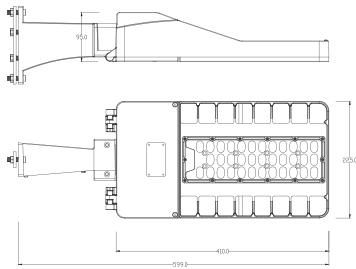
Type of protection	IP66	Heat-sink temperature	-20~+70C
Tested dielectric strength	3.75KVac	Ambient temperature	-30~+50C
Safety features	Open circuit protection; short circuit protection ; Over-voltage protection	Storage temperature	-40~+80C
Certificates	UL, DLC Premium, cUL , CE ,RoHS		
Energy efficiency class	A+ & A++		

Light Distribution

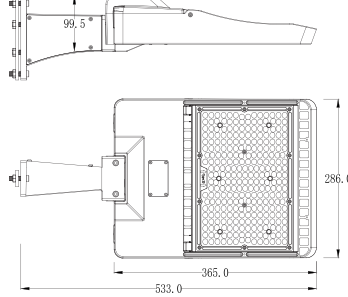


Dimensions (mm)

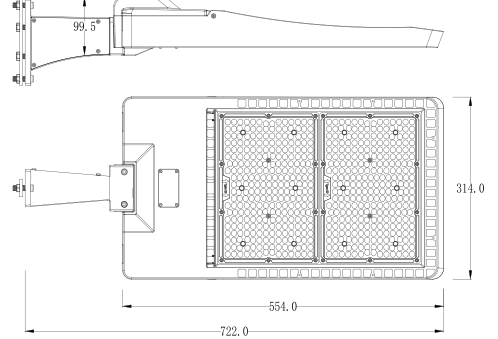
100W 150W



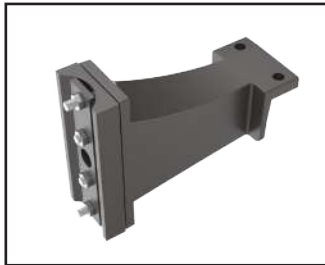
150W 200W



240W 300W



Hardware & Accessories



Round Pole Mount



Square Pole Mount



Slip Fitter Mount



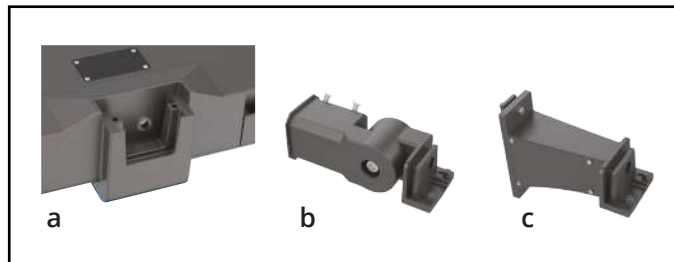
Yoke Mount



Photocell



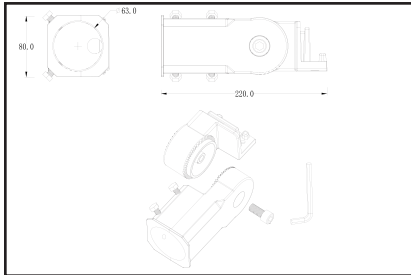
Microwave motion sensor



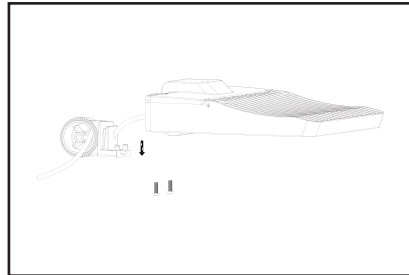
Quick Install (a+b or a+c)

Installation

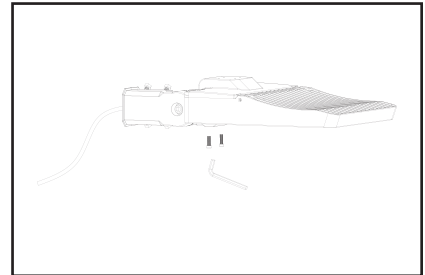
Step:01 Slip fitter mounting



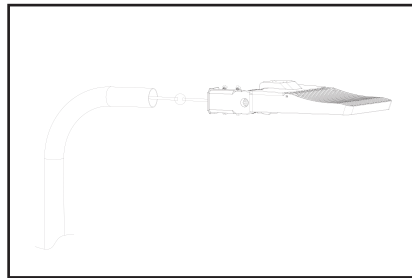
① Loose the M12 screw from the slip fitter bracket



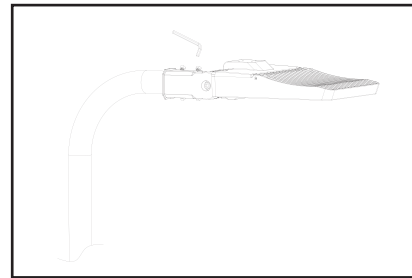
② Bring in the power line through the front part of the slip fitter bracket, then install the bracket part onto the lamp, and tighten the two M6 screws.



③ Pass the lamp input line through the back part of the slip fitter bracket, and then tighten the M12 screws.

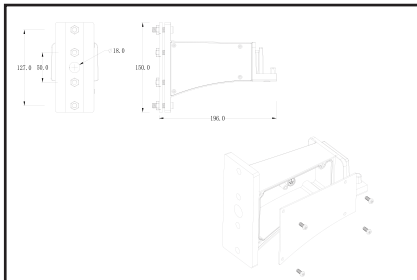


④ Connect to power supply AC 100-277V.

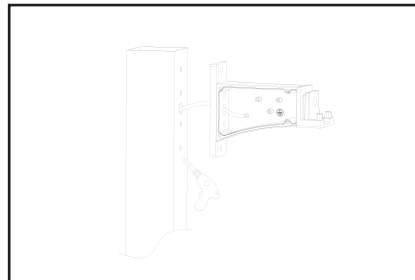


⑤ Install the hole lamp on the pole and tighten four M8 screws.

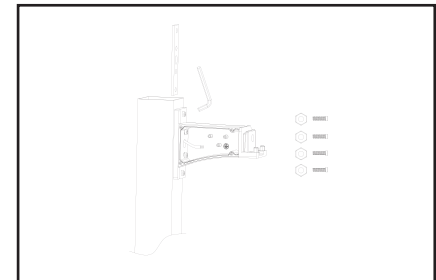
Step:02 Arm mounting or square pole



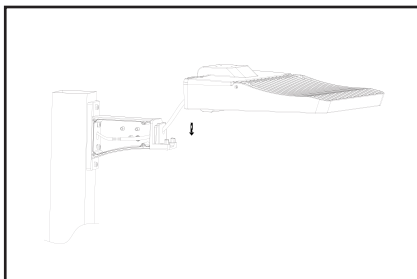
① Remove the screws from the square mounting arm and move the cover plate.



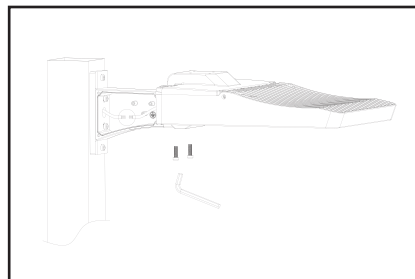
② Drill holes in the square pole corresponding to the holes on the mounting arm, at the position you want to install the fixture, then bring in the electric supply line through the middle hole into the mounting arm.



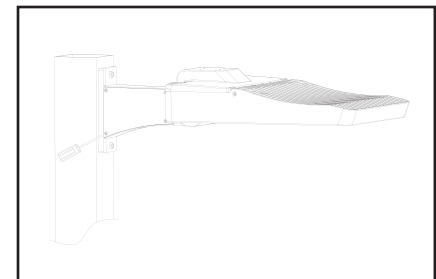
③ Put the bracket reinforcement board in the lamp square pole and fix the bracket on the lamp pole through tightening four M8 screws.



④ Bring in the power line through the hole into the arm and fix the lamp on the mounting arm.

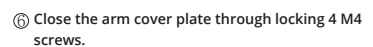
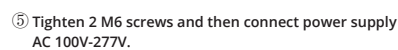
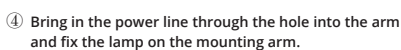
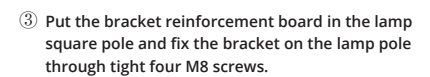
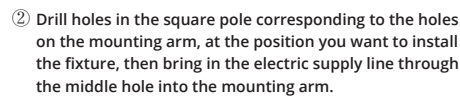
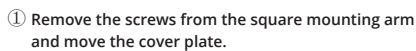


⑤ Tighten 2 M6 screws and then connect the power supply AC 100-277V.

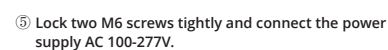
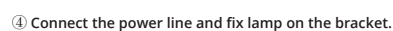
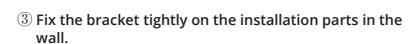


⑥ Close the arm cover plate through locking 4 M4 screws.

■ Step:03 Arm mounting for round pole



① Drill two holes in the wall corresponding to the holes in the mounting bracket, at the position you want to install the fixture.



Application & safety notes

- Carefully read and follow all warnings and instructions before installing or servicing the luminaire.
- The installation should be done by an individual familiar with the construction and operation of the luminaire.
- The installation of this luminaire must be in accordance with national and local building and electrical codes.
- The product must not be damaged or operated in a damaged condition.
- This luminaire must be directly wired on line. Any ballast or other power device previously used with the replaced luminaire must be removed.
- Between the luminaire and any possibly flammable material must be an appropriate safety space (at least 20cm).
- The luminaire must not be covered with heat insulating materials.
- Always provide proper ventilation around the luminaire and do not exceed the maximum ambient temperature.
- Compared to traditional lights the characteristic light distribution of this LED luminaire may differ. In order to be sure to meet your lighting requirements a photometric check of the installation is recommended.

