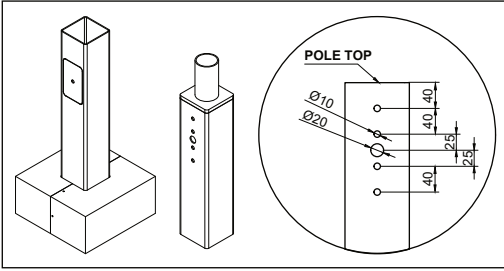
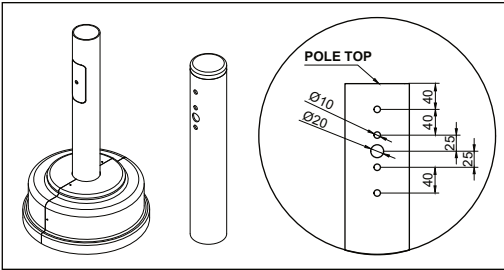


SQUARE STEEL POLES



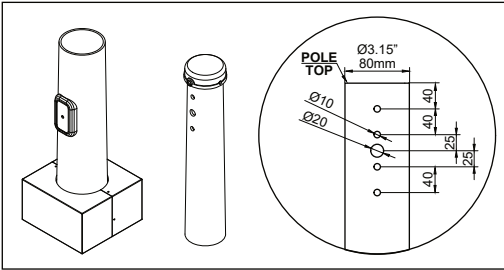
HEIGHT	GAUGE	OD	BOLT CIRCLE	BOLT SIZE	EPA 100	PART #
10 ft	11	4" x 4"	8.27" - 11.42"	M0.79"x19.69"x3.94"	19.4	PPSW-S41011
15 ft					9.5	PPSW-S41511
20 ft					6.2	PPSW-S42011
25 ft					4.1	PPSW-S42511
30 ft		5" x 5"	9.86" - 11.42"	M0.95"x36"x4"	5.8	PPSW-S53011

ROUND STEEL POLES



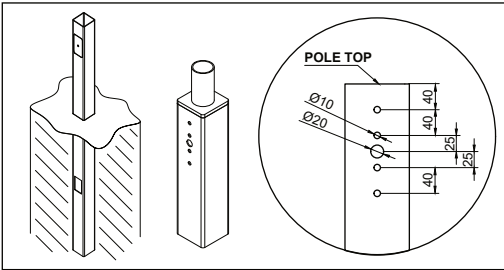
HEIGHT	GAUGE	OD	BOLT CIRCLE	BOLT SIZE	EPA 100	PART #
10 ft	11	3"	8.27" - 10.47"	M0.75"x19.69"x3.94"	16.4	PPSW-R31011
15 ft		4"			10.9	PPSW-R41511
20 ft					6.8	PPSW-R42011
25 ft					5.3	PPSW-R42511
30 ft		5"		M0.95"x36"x4"	4.2	PPSW-R53011

ROUND TAPERED STEEL POLES



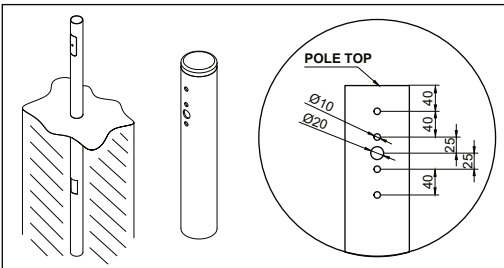
HEIGHT	GAUGE	OD	BOLT CIRCLE	BOLT SIZE	EPA 100	PART #
20 ft	11	6" x 3.15"	9.06" - 11.42"	M0.75"x19.69"x3.94"	8.8	PPSW-RT62011
25 ft		6.5" x 3.15"			7.3	PPSW-RT652511
30 ft	7	7" x 3.15"	9.86" - 11.42"	M0.95"x36"x4"	6.5	PPSW-RT7307

SQUARE STEEL POLES - DIRECT BURIED



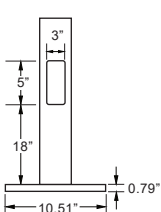
HEIGHT	GAUGE	OD	SURFACE DEPTH	EPA 100	PART #
10 ft	11	4" x 4"	3 ft	19.4	PPSW-SD41011
15 ft				9.5	PPSW-SD41511
20 ft			5 ft	6.2	PPSW-SD42011
25 ft				4.1	PPSW-SD42511
30 ft		5" x 5"		5.8	PPSW-SD53011

ROUND STEEL POLES - DIRECT BURIED

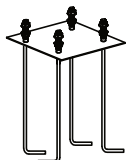


HEIGHT	GAUGE	OD	SURFACE DEPTH	EPA 100	PART #
10 ft	11	4"	3 ft	19.4	PPSW-RD41011
15 ft				11.5	PPSW-RD41511
20 ft			5 ft	7.2	PPSW-RD42011
25 ft				6.1	PPSW-RD42511
30 ft		5"		5.8	PPSW-RD53011

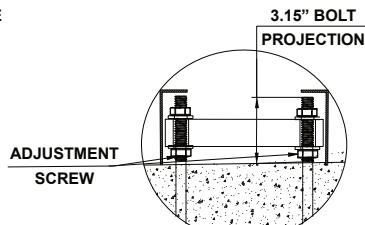
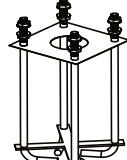
HAND HOLE LOCATION



ANCHOR BOLT PLATE FOR 10-25 ft POLES



ANCHOR BOLT PLATE FOR 30 ft POLES



SHAFT: ASTM-500 Grade B Yield Strength of 46,000 PSI

FINISH: Hot dip Galvanized, Powder Coated Dark Bronze

ANCHORHOLE: Fully Galvanized J Bolts

HANDHOLE: Cast Iron with Ground Screw

BASECOVER: Powder coated steel. Clam shell type for Square and round tapered poles. Round ABS cover for round poles.